

ART 150GB DN50-350

Ductile Iron Butterfly Valve

Double Flanged



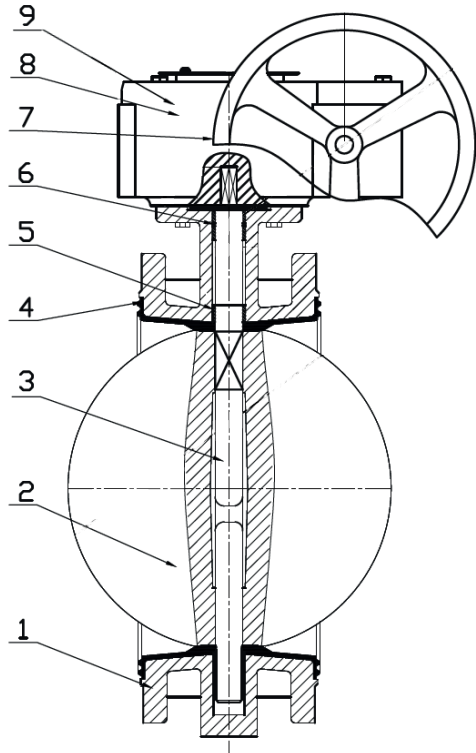
Features

- Flange mounting PN16 only
- BS5155 (BS EN 593)
- ISO 5211 direct mount
- BS EN558-1 Series 13
- Epoxy coat finish
- Vulcanised EPDM Liner

Technical data

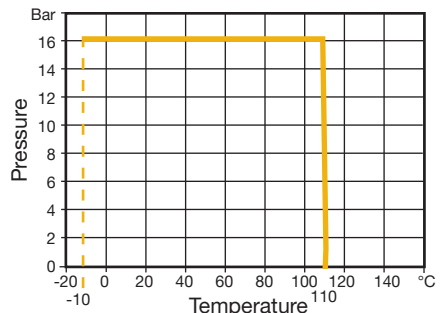
Max pressure: 16 Bar

Working temp: -10°C to +110°C



N. Part Name Materials

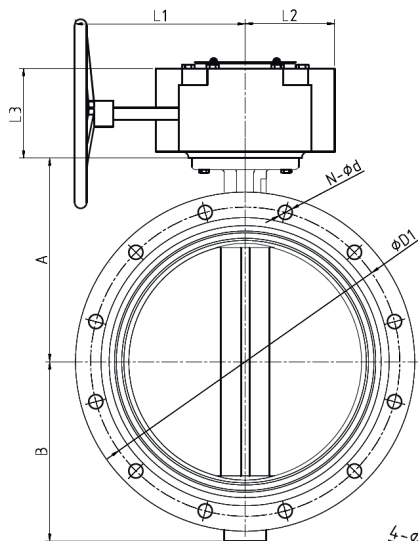
N.	Part Name	Materials
1	Body	EN GJS 400-15
2	Disc	CF8M
3	Shaft	Stainless Steel 420
4	Seat	EPDM
5	Bushing	PTFE
6	O-Ring	NBR
7	Handwheel	Cast Iron
8	Indicator	Carbon Steel
9	Gear	Ductile Iron



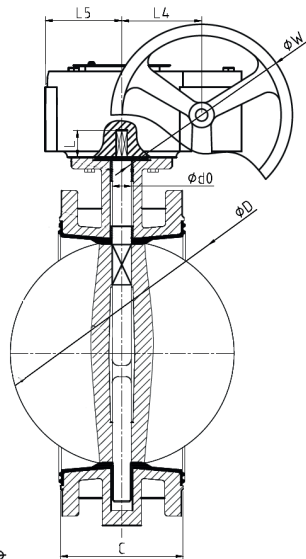
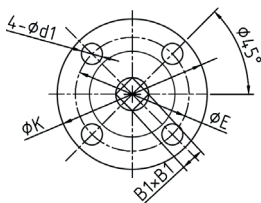
ART 150GB DN50-350

Ductile Iron Butterfly Valve

Double Flanged



TOP FLANGE



DN	50	65	80	100	125	150	200	250	300	350
A	140	130	145	155	170	190	205	235	280	328
B	83	93	100	114	125	143	170	198	223	250
C	108	112	114	127	140	140	152	165	178	190
D	52.9	64.5	78.8	104	123.3	155.1	202.5	250.5	301.5	333.3
d0	12.6	12.6	12.6	15.8	18.9	18.9	22.1	28.5	31.6	31.6
B1	9	9	9	11	14	14	17	22	22	22
L	26	26	26	27	27	27	38	38	40	40
D1	125	145	160	180	210	240	295	355	410	470
N-Ød	4-19	4-19	8-19	8-19	8-19	8-23	12-23	12-28	12-28	16-28
∠°	90	90	45	45	45	45	30	30	30	22.5
ISO 5211	F05	F05	F05	F07	F07	F07	F10	F10	F10	F10
ØK	65	65	65	90	90	90	125	125	125	125
ØE	50	50	50	70	70	70	102	102	102	102
4-Ød1	4-7	4-7	4-7	4-10	4-10	4-10	4-12	4-12	4-12	4-12
W	150	150	150	150	150	150	300	300	300	300
L1	152	152	152	152	152	152	250	250	227	227
L2	52	52	52	52	52	52	75	75	81	81
L3	75	75	75	75	75	75	86	86	83	83
L4	45	45	45	45	45	45	63	63	81	81
L5	52	52	52	52	52	52	75	75	81	81
Torque	15	17	23	41	65	105	192	323	490	625
Kv	90.97	191.44	360.93	892.66	995.29	1705.87	3182.92	4961.15	9252.07	10211.65
Kgs	9.7	12.5	13.0	15.1	19.0	22.3	36.0	49.0	65.6	95.0