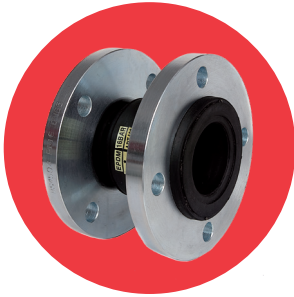


ART 421

EPDM PN25 Flanged Flexible Connector



Features

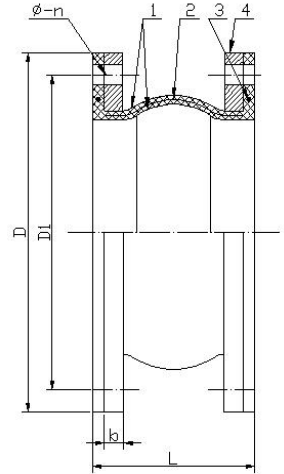
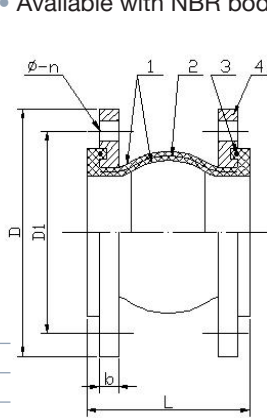
- Flanged PN25
- Zinc plated carbon steel flanges
- Nylon cord fabric with steel reinforcement
- Available with NBR body

Technical data

Max pressure: 25 Bar

Working temp: -20°C to +100°C

N.	Part Name	Materials
1	Body	EPDM
2	Reinforcement	Nylon Cord Wire
3	Pressure Ring	Steel Wire
4	Flange	Carbon Steel



DN32-DN300

DN350-DN600

DN	32	40	50	65	80	100	125	150	200	250	300	350	400	450	500	600
D	140	150	165	185	200	235	270	300	360	425	485	555	620	670	730	845
D1	100	110	125	145	160	190	220	250	310	370	430	490	550	600	660	770
b	18	18	20	22	24	24	26	28	30	32	34	38	40	42	44	46
L	130	130	130	130	130	130	130	130	130	130	130	255	255	255	255	260
Ø-n	18-4	18-4	18-4	18-8	18-8	22-8	26-8	26-8	26-12	30-12	30-16	33-16	36-16	36-20	36-20	39-20
HD	12	12	12	12	12	12	12	12	12	12	12	25	25	25	25	25
DA	15	15	15	15	15	15	15	15	15	15	15	8	8	8	8	8
Ext	8	8	8	8	8	8	8	8	8	8	8	14	14	14	14	14
Comp	15	15	15	15	15	15	15	15	15	15	15	30	30	30	30	30
Kgs	3.4	3.9	5.3	6.1	7.6	10.4	14.3	18.5	26.8	38.1	41.6	41.6	56.8	70.3	82.8	99.4



HD - Horizontal Displacement



DA - Deflection Angular



Ext - Extension



Comp - Compression

