

SLP Series N/O

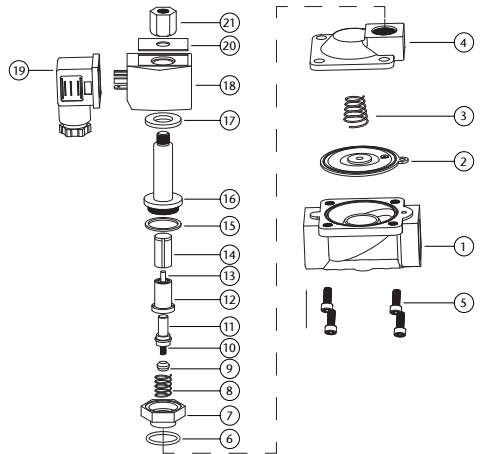
Solenoid Valves Normally Opened



Features

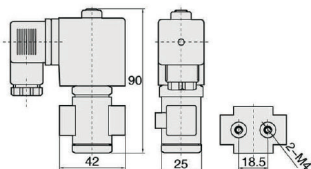
- Available in 230VAC, 110VAC, 12VDC, 24VDC, 24VAC
- Thread standard: ISO 228/1
- Coil Rating: IP 65
- Coil Duty Cycle: 100%
- EPDM model is WRAS approved
- Available sizes -
1/8", 1/4", 3/8", 1/2", 3/4", 1", 1.1/4", 1.1/2", 2"
- Flanged version available in
1", 1.1/4", 1.1/2", 2"

N.	Part Name	Materials
1	Body	Brass
2	Diaphragm	NBR / EPDM / Viton
3	Diaphragm Spring	Stainless Steel 304
4	Valve Cover	Brass
5	Bolt	Stainless Steel 302
6	O-Ring	NBR / EPDM / Viton
7	Midbody	Brass
8	Spring	Stainless Steel 304
9	Mandril Seal	NBR / EPDM / Viton
10	Spring	Stainless Steel 304
11	Mandril	Stainless Steel 304
12	Fixed Amature	Stainless Steel 1J117
13	Pole	Stainless Steel 304
14	Moving Amature	Stainless Steel 1J117
15	Plunger Tube Seal	PTFE
16	Plunger Tube Unit	Stainless Steel 304 + 1J117
17	Baseplate	Plated Steel
18	Coil	Enamelled Wire
19	Plug	Nylon
20	Plate	Aluminium
21	Lock Nut	Stainless Steel 302

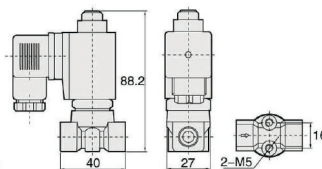


Main Dimensions

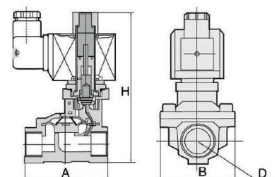
Orifice: 1mm to 2.5mm
Port: 1/8" & 1/4"



Orifice: 3mm
Port: 1/8" & 1/4"



Large Orifice
See table opposite



SLP Series N/O



Port Size (G)	Orifice	Kv Value	Pressure Difference (Bar)					Min/Max. Temp (°C)	VA AC 230V	VA AC 110V	VA AC 24V	W DC 24V	Diaphragm	Main Dimension Ax/BxH
			Min.	Air / Gas	Water / Hot Liquid	Light Oil ≤20CST	Max. Working Pressure							
1/8"	1	0.03	0	30	30	25	0/80	20	28	43	20	NBR	-	
	1	0.03	0	30	30	-	0/120	20	28	43	20	EPDM	-	
	1	0.03	0	30	30	25	0/120	20	28	43	20	VITON	-	
	1.5	0.08	0	20	20	15	0/80	20	28	43	20	NBR	-	
	1.5	0.08	0	20	20	-	0/120	20	28	43	20	EPDM	-	
	1.5	0.08	0	20	20	15	0/120	20	28	43	20	VITON	-	
	2.5	0.17	0	15	15	12	0/80	20	28	43	20	NBR	-	
	2.5	0.17	0	15	15	-	0/120	20	28	43	20	EPDM	-	
	2.5	0.17	0	15	15	12	0/120	20	28	43	20	VITON	-	
	3	0.22	0	12	12	10	0/80	20	28	43	20	NBR	-	
3	0.22	0	12	12	-	0/120	20	28	43	20	EPDM	-		
3	0.22	0	12	12	10	0/120	20	28	43	20	VITON	-		
1/4"	1	0.03	0	30	30	25	0/80	20	28	43	20	NBR	-	
	1	0.03	0	30	30	-	0/120	20	28	43	20	EPDM	-	
	1	0.03	0	30	30	25	0/120	20	28	43	20	VITON	-	
	1.5	0.08	0	20	20	15	0/80	20	28	43	20	NBR	-	
	1.5	0.08	0	20	20	-	0/120	20	28	43	20	EPDM	-	
	1.5	0.08	0	20	20	15	0/120	20	28	43	20	VITON	-	
	2.5	0.17	0	15	15	12	0/80	20	28	43	20	NBR	-	
	2.5	0.17	0	15	15	-	0/120	20	28	43	20	EPDM	-	
	2.5	0.17	0	15	15	12	0/120	20	28	43	20	VITON	-	
	3	0.22	0	12	12	10	0/80	20	28	43	20	NBR	-	
3	0.22	0	12	12	-	0/120	20	28	43	20	EPDM	-		
3	0.22	0	12	12	10	0/120	20	28	43	20	VITON	-		
3/8"	13	3.89	0.5	8	8	7	0/80	20	28	43	20	NBR	66x48x124	
	13	3.89	0.5	8	8	-	0/120	20	28	43	20	EPDM	66x48x124	
	13	3.89	0.5	8	8	7	0/120	20	28	43	20	VITON	66x48x124	
1/2"	13	3.89	0.5	8	8	7	0/80	20	28	43	20	NBR	66x48x124	
	13	3.89	0.5	8	8	-	0/120	20	28	43	20	EPDM	66x48x124	
	13	3.89	0.5	8	8	7	0/120	20	28	43	20	VITON	66x48x124	
3/4"	20	6.57	0.5	8	8	7	0/80	20	28	43	20	NBR	75x58x130	
	20	6.57	0.5	8	8	-	0/120	20	28	43	20	EPDM	75x58x130	
	20	6.57	0.5	8	8	7	0/120	20	28	43	20	VITON	75x58x130	
1"	25	10.37	0.5	8	8	7	0/80	20	28	43	20	NBR	96x70x143	
	25	10.37	0.5	8	8	-	0/120	20	28	43	20	EPDM	96x70x143	
	25	10.37	0.5	8	8	7	0/120	20	28	43	20	VITON	96x70x143	
1 1/4"	35	19.01	0.5	8	8	7	0/80	20	28	43	20	NBR	131x96x158	
	35	19.01	0.5	8	8	-	0/120	20	28	43	20	EPDM	131x96x158	
	35	19.01	0.5	8	8	7	0/120	20	28	43	20	VITON	131x96x158	
1 1/2"	40	25.92	0.5	8	8	7	0/80	20	28	43	20	NBR	131x96x158	
	40	25.92	0.5	8	8	-	0/120	20	28	43	20	EPDM	131x96x158	
	40	25.92	0.5	8	8	7	0/120	20	28	43	20	VITON	131x96x158	
2"	50	41.47	0.5	8	8	7	0/80	20	28	43	20	NBR	165x120x179	
	50	41.47	0.5	8	8	-	0/120	20	28	43	20	EPDM	165x120x179	
	50	41.47	0.5	8	8	7	0/120	20	28	43	20	VITON	165x120x179	